

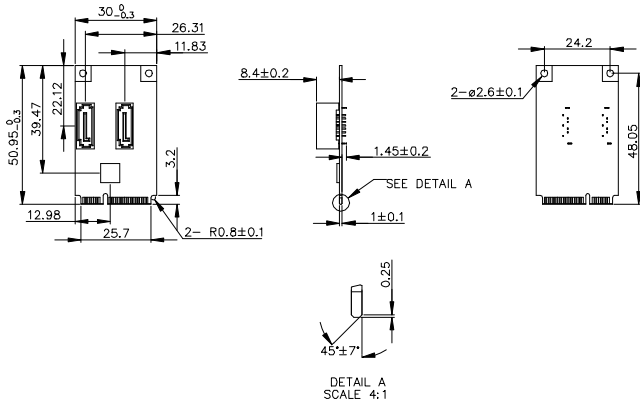
SATA III 7pin MALE

Features

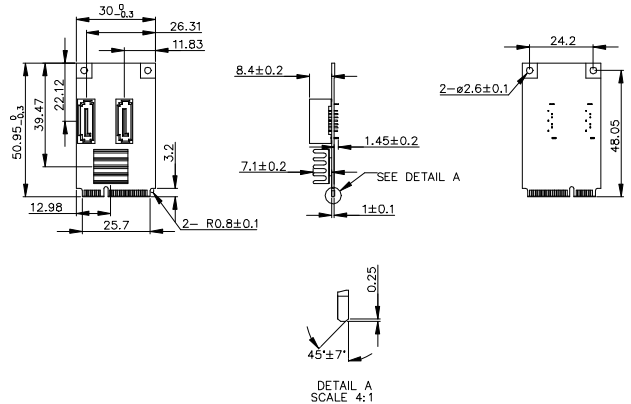
- mPCIe to dual SATA III ports.
- Low power consumption.
- Supports AHCI, Port-Multiplier.
- Supports Native Command Queuing
- Supports wide temp
- 30μ golden finger, 3 years warranty
- Industrial design, manufactured in innodisk Taiwan

Mechanical Drawing

Standard Temp



Wide Temp



Specifications

Headquarters (Taiwan)
 5F., No. 237, Sec. 1, Datong Rd.,
 Xizhi Dist., New Taipei City 221,
 Taiwan
 Tel: +886-2-77033000
 Email: sales@innodisk.com

Branch Offices:
USA
usales@innodisk.com
 +1-510-770-9421

Europe
esales@innodisk.com
 +31-040-282-1818

Japan
jpsales@innodisk.com
 +81-45-594-7581

China
sales_cn@innodisk.com
 +86-755-21673689

www.innodisk.com

© 2014 Innodisk Corporation.
 All right reserved. Specifications
 are subject to change without
 prior notice.

October 14, 2015

Form-Factor	mPCIe
Input I/F	PCI Express 2.0
Output I/F	SATA III
Output Connector	SATA 7pin x 2
TDP	1W (3.3V x 320mA)
Dimension (WxLxH)	Standard Temp: 30 x 50.9 x 10.85 mm, Weight: 8.5g Wide Temp: 30 x 50.9 x 10.85 mm, Weight: 8.5g
Temperature	Operation: STD: 0°C ~ +70°C WT: -40°C ~ +85°C Storage: -55°C ~ +95°C
Environment	Vibration: 5G @7~2000Hz, Shock: 50G @ 0.5ms
Notes	

Order information

- EMPS-3201-C1**
mPCIe to dual SATA III Module
- EMPS-3201-W1**
mPCIe to dual SATA III Module W/T

Authorised Distributor ADITECH ICT PVT. LTD.

803,sigma IT park,
 plat no 203/204 Rabale, TTC Industrial area,
 Thane-Belapur road, Rabale-400701
 Tel:+91 9819884527 Email: sales@aditech.in
 Website: www.aditech.in